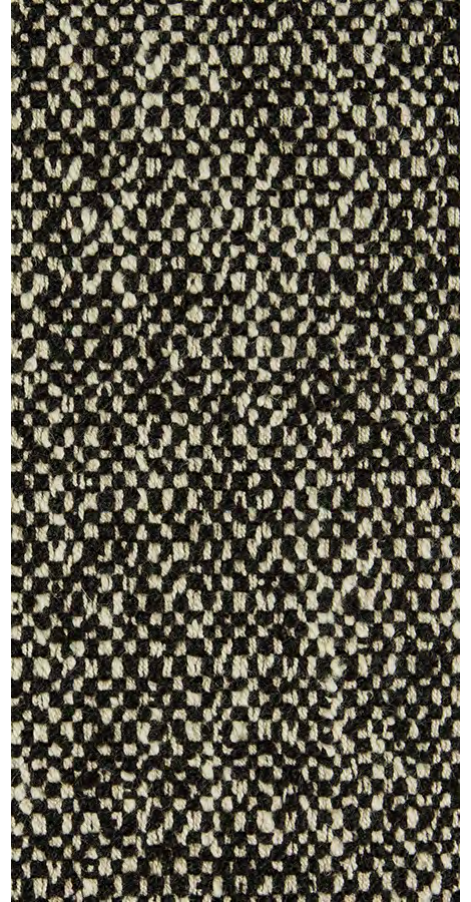


COUP STUDIO FABRICS



BLACK / FIESOLE

44% COTTON / 19% VISCOSE / 17% POLYESTER / 8% POLY COTTON / 7% WOOL / 5% LINEN

MADE IN ITALY

FB-CS-FIESOLE-11

| | |
|---------|--|
| NAME | FIESOLE / BASKETWEAVE |
| NUMBER | FB-CS-FIESOLE |
| WIDTH | 55" |
| CONTENT | 44% CO / 19% VI / 17% PL / 8% PC / 7% WO / 5% LI |
| TEST | 20000 |
| ORIGIN | ITALY |

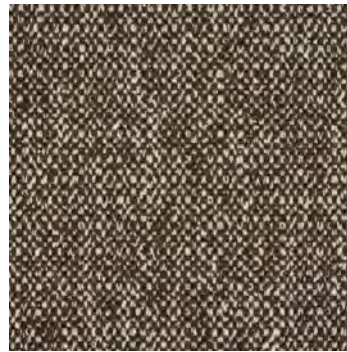
AVAILABLE COLORS



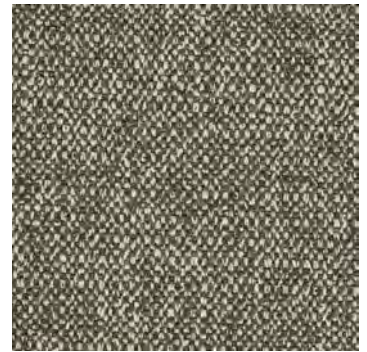
IVORY



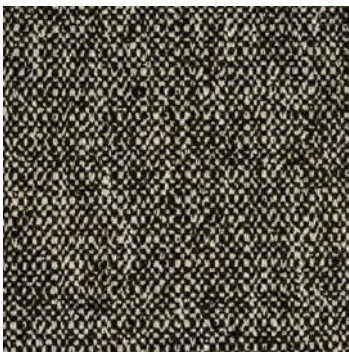
OATMEAL



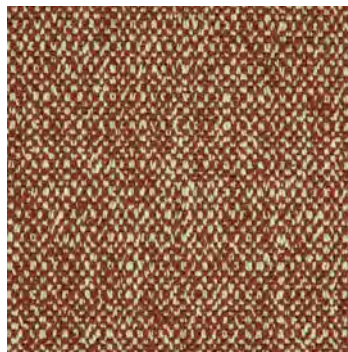
CHOCOLATE



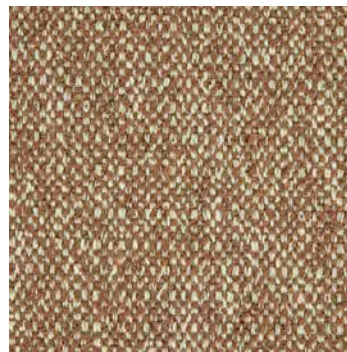
LEAD



BLACK



RUST



CARAMEL