



Campanha Chaise

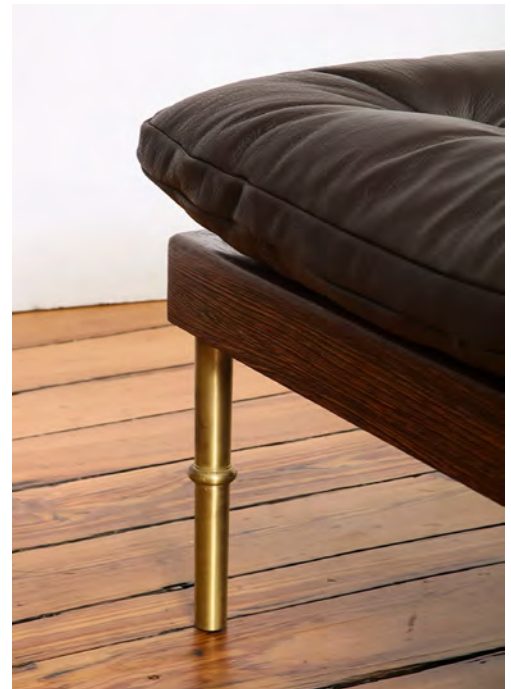
by **DE LA VEGA**

Contemporary

United States

The Campanha collection is a mix of classical campaign furniture and mid century modernism. Infused with a rugged meets refined aesthetic, the collection's tufted leather upholstery details are offset by careful and precise facets of turned brass married with wood.

US-DLV-CAMPANHA CHAISE



ITEM NO.	DIMENSIONS	UPHOLSTERY DETAIL
US-DLV-CAMPANHA CHAISE	86 1/2" W x 34 1/2" D x 31 1/8" H AH: 23"	COM: 8 yds COL: 144 sq ft

WOOD OPTIONS:	UPHOLSTERY OPTIONS:	METAL OPTIONS:	ADDITIONAL:
Wenge Walnut Oak Oxidized Maple Ebonized Ash	COM COL DLV Collection Leathers	Satin Brass Satin Nickel Oil-Rubbed Bronze Antique Bronze Gunmetal	Price upon request.

Wood for Abuelo & Campanha
by DE LA VEGA



Wenge



Oak



Walnut



Oxidized Maple

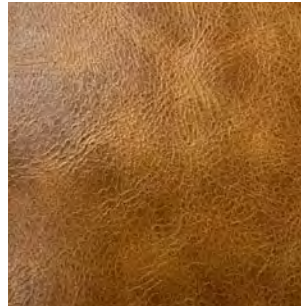


Ebonized Ash

Leather for Seating
by DE LA VEGA



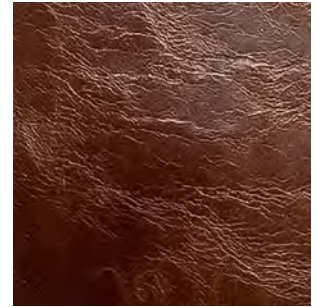
Black



Buckskin



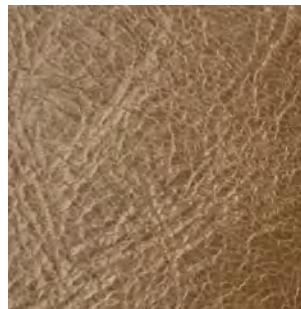
Cinnamon



Dark Brown



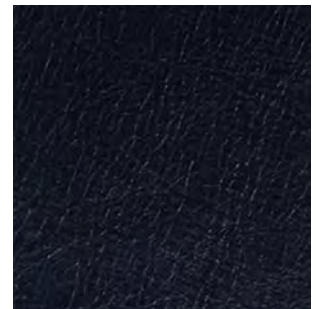
Magenta



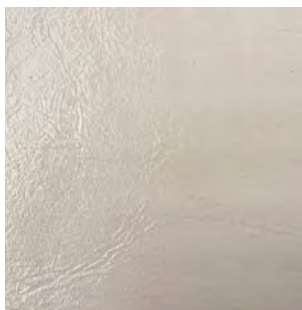
Parchment



Alga



Navy



Talco



Fumo

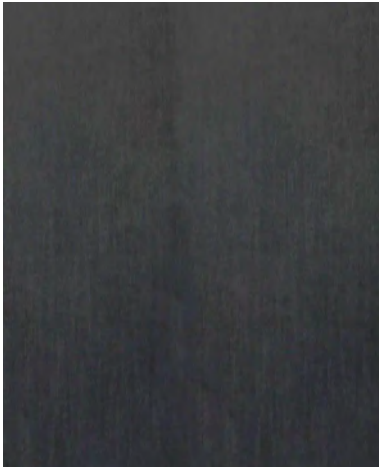


Butter



Avio

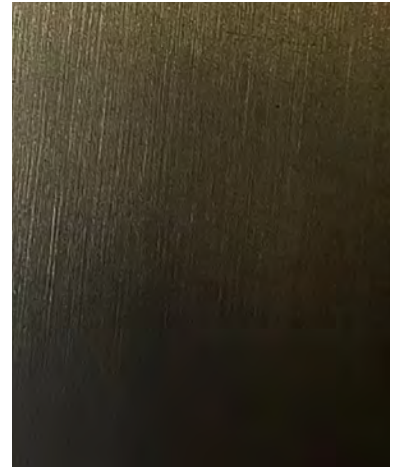
Metal for Abuelo & Campanha
by DE LA VEGA



Gunmetal



Antique Bronze



Oiled-Rubbed Bronze



Satin Brass



Satin Nickel