

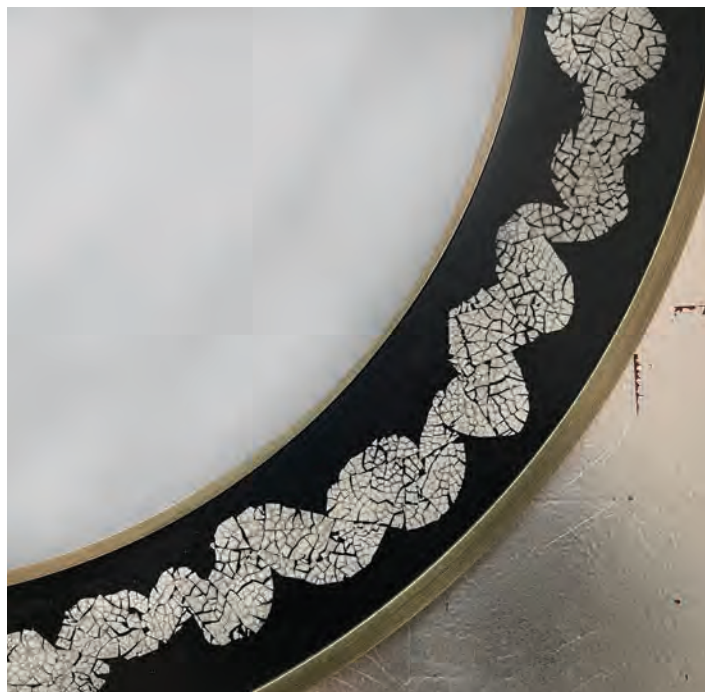


**Couronne Mirror**  
*by* DE LA VEGA

*Contemporary*  
United States

The Couronne Mirror features a crown like ring of hand-cracked eggshell embedded into the resin & lacquer.

PM-DLV-COURONNE



COURONNE MIRROR

# COUP D'ETAT

ITEM NO.

DIMENSIONS

---

PM-DLV-COURONNE

34" Dia. x 1" H

---

**METAL OPTIONS:**

Satin Brass  
Oil-Rubbed Bronze  
Gunmetal  
Antique Bronze  
Satin Nickel

**EGGSHELL OPTIONS:**

Espresso  
Jade  
Black

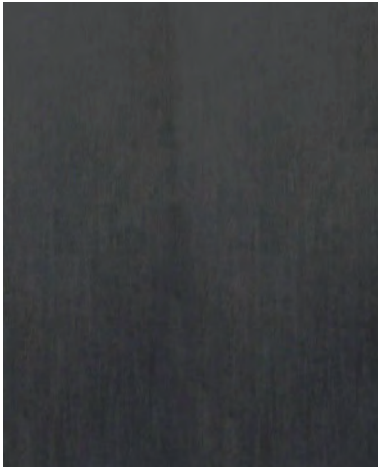
**MIRROR OPTIONS:**

Clear  
Antique

**ADDITIONAL:**

Custom sizes available.  
Price upon request.

Metal for Couronne  
by DE LA VEGA



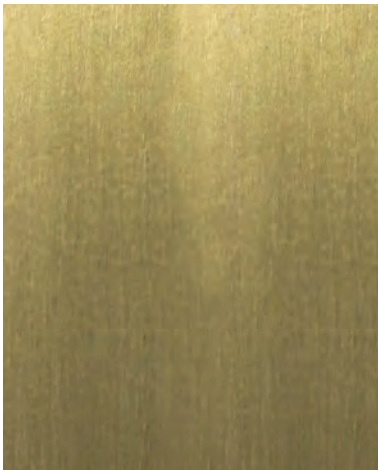
Gunmetal



Antique Bronze



Oiled-Rubbed Bronze



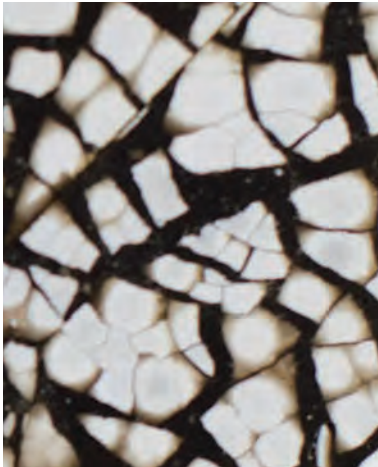
Satin Brass



Satin Nickel

Eggshell

by DE LA VEGA



Eggshell in Espresso



Eggshell in Jade



Eggshell in Black

---

COQUILLE D'OEUF

An old-world Vietnamese lacquer technique used to create delicate and unique surfaces. Before there was a white pigment for lacquer, artisans would use bits of duck or chicken egg embedded by hand into the surface.

Mirror for Couronne  
by DE LA VEGA



Clear



Antique