



CB-464 Geometric Dining Table

Geometric Dining Table

by BassamFellows

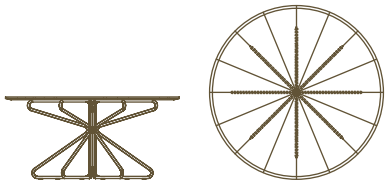
Contemporary

Italy

The Geometric Collection from BassamFellows celebrates the sublimity of pure geometry championed by the Wiener Werkstätte and the Bauhaus. The Geometric Dining Table is BassamFellows' first pedestal table. It features a nanoceramic coated tubular steel base formed from a collection of radiating postal elements mechanically fixed and cinched together with wrapped leather. The leather wrapping conceals all mechanical joints forming a signature element that runs through the Geometric Collection. The top is veneered wood with a carved, solid wood edge. The veneer radiates from the center highlighting the design's overall geometry and the importance of linearity and architectural draftsmanship inherent in BassamFellows' work.

CB-464 Geometric Dining Table



DESCRIPTION	WEIGHT	DIMENSIONS	CODE
	323.4 lbs	W 61" D 61" H 28 3/8" T 1"	CB-464-A CB-464-O CB-464-W

CB-464
Geometric Dining Table

WOOD TYPES:

- Ash Veneer with Solid Ash Edge (A)
- Oak Veneer with Solid Oak Edge (O)
- Walnut Veneer with Solid Walnut Edge (W)

WOOD FINISHES:

Ebonized black lacquer on Ash (EB) or bleached, white pigment, matte acrylic on Ash (BL). Raw effect lacquer on Oak (RE). Hand rubbed natural oil on Oak or Walnut (NA), or hand rubbed black oil on Walnut (BO).

METAL FINISHES:

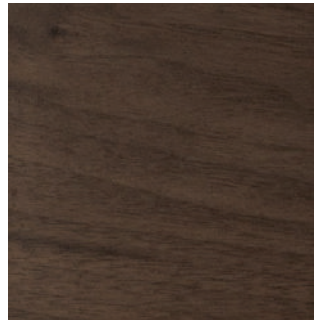
Tubular steel with smoke powder coat finish (SP), or satin nickel (SN), satin brass (SB), bronze (BZ), gunmetal (GM), or custom metal (CM) nanoceramic coated tubular steel.

Wood

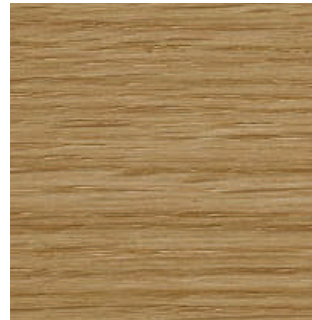
by BassamFellows



Walnut
W-NA



Walnut Black Oil
W-BO



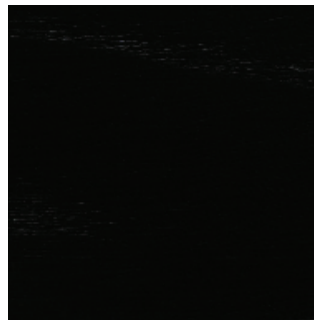
Oak
O-NA



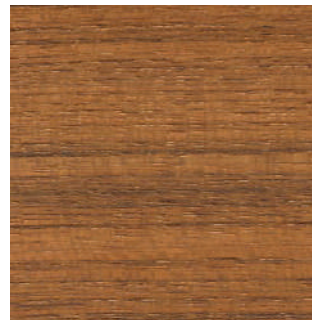
Oak Raw Effect
O-RE



White Ash
A-BL



Ebonized Ash
A-EB



Teak
T-NA



Iroko
I-NA



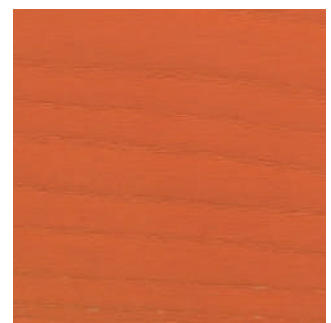
Sage Green Ash
A-SG



Sun Yellow Ash
A-SY



Horizon Blue Ash
A-HB



Mesa Red Ash
A-MR

Metal

by BassamFellows



Matte Black
BP



Satin Nickel
SN



Satin Brass
SB



Bronze
BZ



Gunmetal
GM



Oxidized Brass
BR



Stainless Steel
SS

Nanoceramic coated steel is a more durable and environmentally improved alternative to traditional metal plating where nano particles of metal are mixed with resin and sprayed onto the metal surface versus being placed in a chemical bath.

Additional colors available. Minimum and upcharge may apply.

Matte Black
Powder coated steel

Satin Nickel
Nanoceramic coated steel

Satin Brass
Nanoceramic coated steel

Bronze
Nanoceramic coated steel

Gunmetal
Nanoceramic coated steel

Oxidized Brass
Hand brushed solid brass

Stainless Steel
Hand brushed stainless steel