

COUP STUDIO FABRICS



IVORY / FIESOLE

44% COTTON / 19% VISCOSE / 17% POLYESTER / 8% POLY COTTON / 7% WOOL / 5% LINEN

MADE IN ITALY

FB-CS-FIESOLE-01

NAME	FIESOLE / BASKETWEAVE
NUMBER	FB-CS-FIESOLE
WIDTH	55"
CONTENT	44% CO / 19% VI / 17% PL / 8% PC / 7% WO / 5% LI
TEST	20000
ORIGIN	ITALY

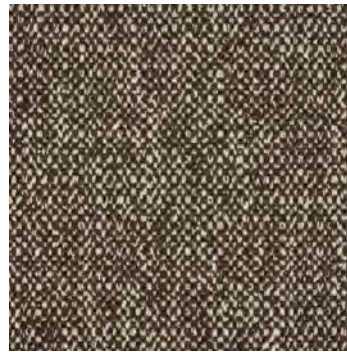
AVAILABLE COLORS



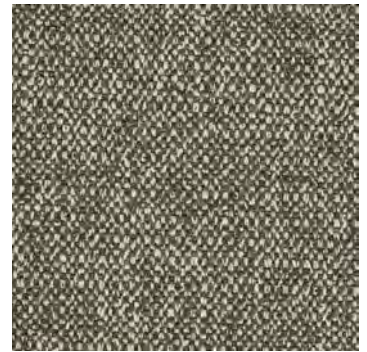
IVORY



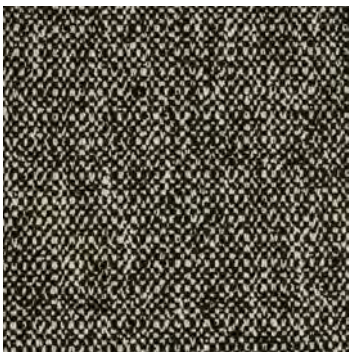
OATMEAL



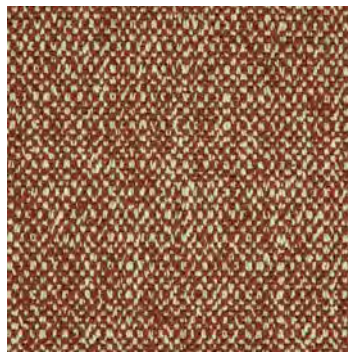
CHOCOLATE



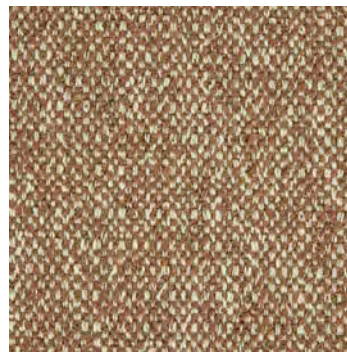
LEAD



BLACK



RUST



CARAMEL