



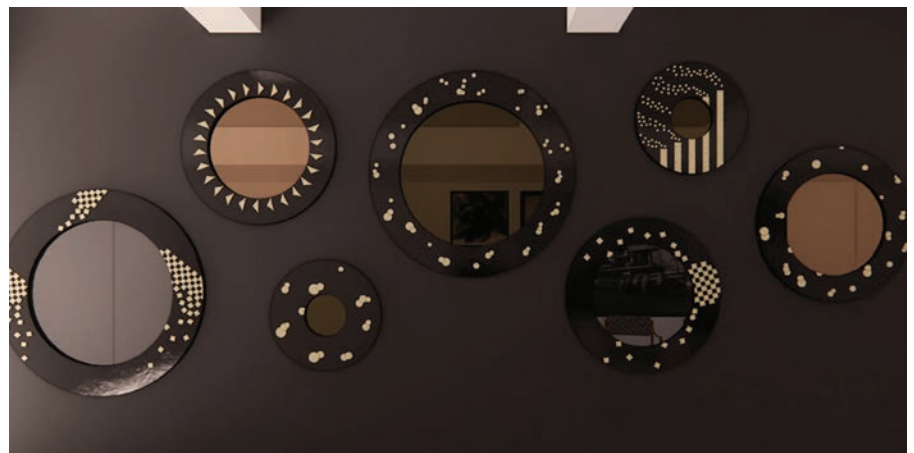
Jules Mirror by DE LA VEGA

Contemporary
United States

The Jules Collection – inspired by Jean Dunand's timeless artistry. These mirrors are meticulously crafted from an archive of resin-cured eggshell remnants, infusing each piece with a touch of the studio's history.

De La Vega's ingenuity shines through as he weaves sun rays, champagne bubbles, geometry, and Art Deco motifs into captivating mirror patterns. Cast in durable resin, delicately trimmed with bronze, – the Jules Collection exudes both luxury and versatility

20" PM-DLV-JULES-20
32" PM-DLV-JULES-32
48" PM-DLV-JULES-48



JULES MIRROR

COUP D'ETAT

ITEM NO.	DIMENSIONS
----------	------------

20" PM-DLV-JULES-20	20" Dia. x 1" H
------------------------	-----------------

32" PM-DLV-JULES-32	32" Dia. x 1" H
------------------------	-----------------

48" PM-DLV-JULES-48	48" Dia. x 1" H
------------------------	-----------------

METAL OPTIONS:

Satin Brass
Satin Nickel
Antique Bronze
Oiled-Rubbed Bronze
Gunmetal

STYLE OPTIONS:

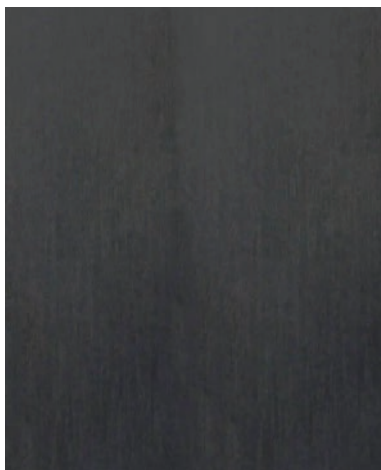
Checkers
Bubbles
Sunbursts
Cigarettes

ADDITIONAL:

Price upon request.

Metal for Jules

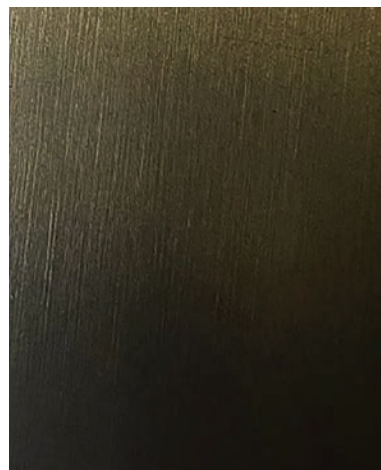
by DE LA VEGA



Gunmetal



Antique Bronze



Oiled-Rubbed Bronze



Satin Brass



Satin Nickel