

# COUP D'ETAT

## CATALOG 2025

AFTER EDITIONS  
BAROVIER&TOSO  
BASSAMFELLOWS  
CHRISTOPHER BOOTS  
CHUCK MOFFIT  
COUP STUDIO  
COUP STUDIO FABRICS  
COUP XX  
DAMIAN JONES  
DANIEL SHAPIRO  
DAX SAVAGE  
DE LA VEGA  
DOUGLAS FANNING  
EDWIN MALDONADO  
ELAN ATELIER  
ENTRELACS  
HARRY SITER  
JG SWITZER  
JOCELYN MARSH  
J LISTON DESIGN  
J MCDONALD  
J.M. SZYMANSKI  
KALLIOPI LYDAKI  
KELLY FARLEY  
KONEKT  
LESLIE NIX  
LINDA FAHEY  
MARY WONG  
OCHRE  
OCHRE WILD  
PATRICK WEDER  
PETER BOIGER  
REFRACTORY  
ROSE GOLD SOCIETY  
SHARON BEALS  
SKRAM

SAN FRANCISCO

LOS ANGELES

# COUP D'ETAT

---

Established in 2004, Coup D'Etat has blossomed into a captivating, high-end design gallery that transcends the boundaries of traditional showrooms. With meticulous curation at its core, our gallery showcases an extraordinary collection that encompasses coveted vintage and antique pieces, esteemed designer lines, and exclusive works from talented artisans across the globe.

Our visionary creative team reimagines our gallery space every ten weeks, creating an awe-inspiring ambiance that is truly unparalleled. Each visit promises an enchanting “Coup Experience,” transporting you to a realm of unrivaled beauty and refined luxury.



Locate in:

San Francisco

Los Angeles

4-6	AFTER EDITIONS	34-36	DAX SAVAGE	64-66	J MCDONALD	94-96	PATRICK WEDER
7-9	BAROVIER&TOSO	37-39	DE LA VEGA	67-69	J.M. SZYMANSKI	97-99	PETER BOIGER
10-12	BASSAMFELLOWS	40-42	DOUGLAS FANNING	70-72	KALLIOPI LYDAKI	100-102	REFRACTORY
13-15	CHRISTOPHER BOOTS	43-45	EDWIN MALDONADO	73-75	KELLY FARLEY	103-105	ROSE GOLD SOCIETY
16-18	CHUCK MOFFIT	46-48	ELAN ATELIER	76-78	KONEKT	106-108	SHARON BEALS
19-21	COUP STUDIO	49-51	ENTRELACS	79-81	LESLIE NIX	109-111	SKRAM
22-24	COUP STUDIO FABRICS	52-54	HARRY SITER	82-84	LINDA FAHEY		
25-27	COUP XX	55-57	JG SWITZER	85-87	MARY WONG		
29-30	DAMIAN JONES	58-60	JOCELYN MARSH	88-90	OCHRE		
31-33	DANIEL SHAPIRO	61-63	J LISTON DESIGN	91-93	OCHRE WILD		



AFTER EDITIONS



RACHIS TABLE



After Editions is a collective of creative talents, founded in 2023 by Dylan and Nicolette Farrell. We design objects that unite contemporary craftsmanship with courageous playfulness. Born of a love for collaging utility with ornament and constructivism with romance, our studio takes joy in tinkering with unexpected visual narratives that are grounded in classical sensibilities.

Each object offered by After Editions is thoughtfully crafted in close collaboration with some of the world's most talented artisans, combining age-old techniques with the most modern technologies available. Artistic risks are taken. Gimmicks are avoided. The goal is to offer heirloom pieces filled with undiluted personality.



ANTLER CONSOLE



SAIL CHANDELIER



WONDERLAND WALL SCULPTURE



LEVELLER BAR STOOLS



LADY LEVELLER CHAIR



BAROVIER&TOSO



NEW FELCI CHANDELIER AT COUP D'ETAT LA



Few brands that exist today can claim to predate the Italian Renaissance, but Murano, Italy-based lighting company Barovier&Toso is one such brand. Founded in 1295 by the Barovier family, Barovier&Toso is credited as the world's sixth-oldest business still in operation.

For over 20 generations, these glassmakers have become masters in the art of Venetian glass. This company demonstrates remarkable expertise in crafting bespoke lighting solutions while consistently innovating with a wide range of new designs, encompassing both contemporary and traditional styles that are destined to become timeless classics.

Barovier&Toso has a reputation for illustrious lighting designs and a discriminating clientele; this company's timeless obsession with perfection and innovation has lasted more than 700 years.



BISSA BOBA CHANDELIER & VERONESE TABLE LAMP



PERSEUS



FANALI VENEZIANI



4607



SPINN



BASSAMFELLOWS



WOOD FRAME LOUNGE CHAIR AND ASYMMETRIC SOFAS



Architect Craig Bassam and creative director Scott Fellows are the founders of BassamFellows and the Craftsman Modern aesthetic. Their aesthetic ethos was formed from their collaborative vision for the brand, marrying architectural authority with a minimal-artisanal philosophy. From its inception, the company has focused on building relationships with some of the world's leading craftspeople, whilst forging innovative and intelligent collaborations across the worlds of architecture, branding, and design. A genuine, fully integrated lifestyle brand, BassamFellows, encompasses architectural projects and interiors as well as impeccably crafted furniture.



DAYBED & ASYMMETRIC COLLECTION





WOOD FRAME COUNTER & KANT TABLE



ASYMMETRIC COLLECTION



WOOD FRAME LOW BACK LOUNGE CHAIRS



SPOKE OCCASIONAL TABLE  
& SLING CLUB CHAIRS



CHRISTOPHER BOOTS

---



GOLIATH



Christopher Boots is a Melbourne-based industrial designer driven by a love of nature and light. Christopher's handmade work includes lighting, furniture, and objects. He explores the architecture of the geometry of organic shapes and is often inspired by forms found in plants, animals, and minerals.



Available in:

San Francisco

Los Angeles



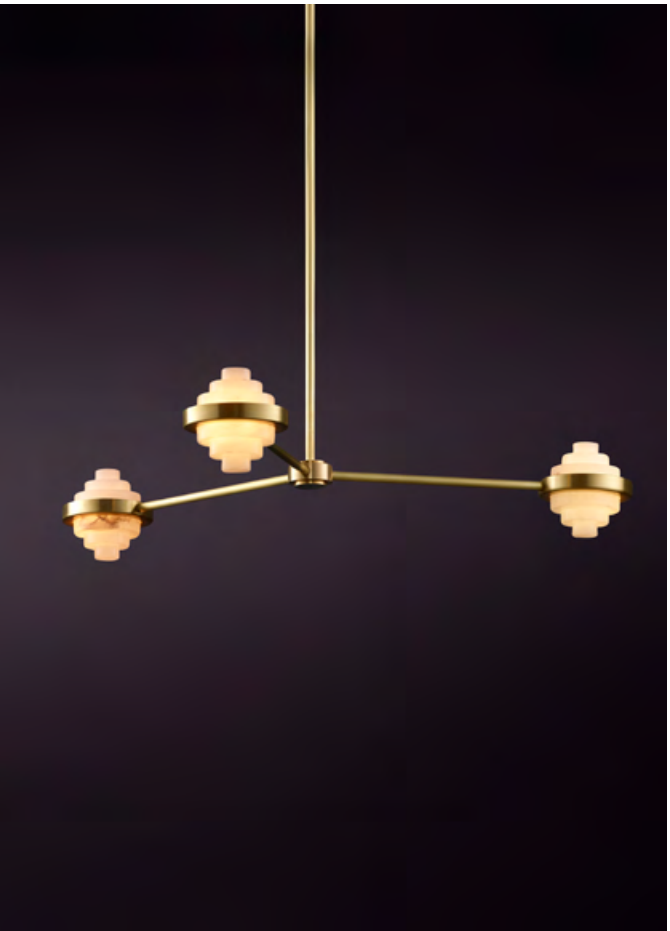
PETRA I COLUMN



OURANOS



STALACTITE



IRIS TRIA



CHUCK MOFFIT



ARMOR SIDEBORD



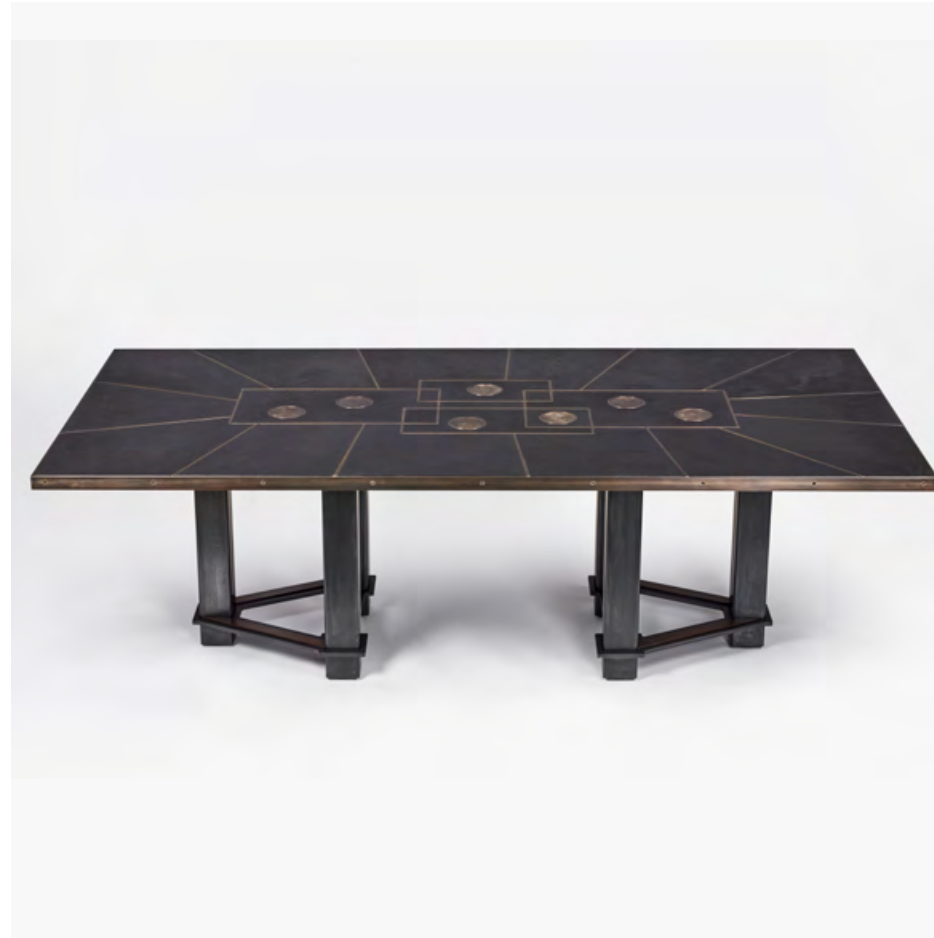
Southern California-based artist and furniture designer Chuck Moffit creates work that marries time-honored techniques with innovative mechanics. His collections balance brutalist processes while incorporating delicate details. Moffit creates his pieces out of glass, steel, bronze, and leather, but is not confined by these materials and is engaged in experimenting with unexpected elements. His work often blurs the lines between art and functional furniture.



TOPO XX003



INSURGO TABLE LAMP



STRATUM DINING TABLE



TIBERINUS COFFEE TABLE



COUP STUDIO



CASINO ARMOIRE, CREDENZA & SOFFICE SECTIONAL



Founded in 2010 by Darin Geise, COUP STUDIO merges modern craftsmanship with a passion for high-quality antiques and vintage designs. Inspired by Geise's extensive travels and discerning eye, the collection offers collectible, elevated pieces that endure stylistically and materially. This range spans luxury furniture to statement lighting, each crafted with exceptional artistry and quality.

Designed in-house and produced by master artisans in California and Italy, COUP STUDIO emphasizes customization through unique finishes, sizes, and fabric choices. The studio's collaborations with renowned artists yield exclusive, limited-edition pieces that underscore its commitment to refined design and meticulous execution, overseeing every detail from conception to completion.



TURN AROUND SWIVEL CLUB CHAIRS & OTTOMAN





AQUITAINE CHANDELIER



BELL CHANDELIER



MUSHROOM STOOL & BELO TABLE



BIOMORPHIC SECTIONAL



## COUP STUDIO FABRICS

---





Alongside Darin Geise's distinguished COUP STUDIO furniture and lighting collections, he has channeled his diverse talents into the curation of a textile collection. COUP STUDIO FABRICS reflect his powerful visual perspective, harmoniously intertwined with a meticulously selected color palette that mirrors the brand's lively and playful aesthetic.

We partner with expert weavers who share our passion for design and quality to produce exceptional textiles.

The collections boast a refined interplay of approachable shades and textures, thoughtfully designed to integrate into a wide range of applications. They not only complement our comprehensive furniture offerings but also elevate the aesthetic of any space.



SKYLINE - CAMEL



SUVERETO - LINEN



ZUCCHEROSO - WOVEN



PANZANO - WOVEN



BEL LINO - LINEN



COUP XX

\* THE ITEMS ON THIS PAGE ARE ONLY FOR REFERENCE. ITEMS SHOWN MAY NOT BE AVAILABLE. PLEASE INQUIRE.



CONFIDENTIAL SECTIONAL & CHAIR & TINO FLOOR LAMP

COUP XX, a curated collection of twentieth-century design and an assortment of contemporary pieces that nod to the past. All handpicked by COUP D'ETAT founder, Darin Geise.

COUP D'ETAT was established in 2004 by Geise. In a tiny storefront on 18th Street in San Francisco, he conceived an amalgam space, equal parts traditional and modern. Geise quickly developed a following in the San Francisco design community and became a resource for curated vintage and antique furniture.

During its 18 years of business, COUP D'ETAT has evolved into a contemporary design gallery. This change has not altered the desire to continue to showcase unique vintage pieces. The backbone of our visual displays is the layering of contemporary and vintage furnishings.

Darin's passion for travel and discovery fuels his commitment to sourcing high quality vintage that is available in both COUP D'ETAT locations.



NOVEMILA MODULAR SOFA





FACE JUGS



CHELSEA CHAIRS  
BY VITTORIO INTROINI



TAO SIDE TABLE  
BY PHILIP & KELVIN LAVERNE



DU55A ARMCHAIR & PLUTONE FLOOR LAMP



DAMIAN JONES

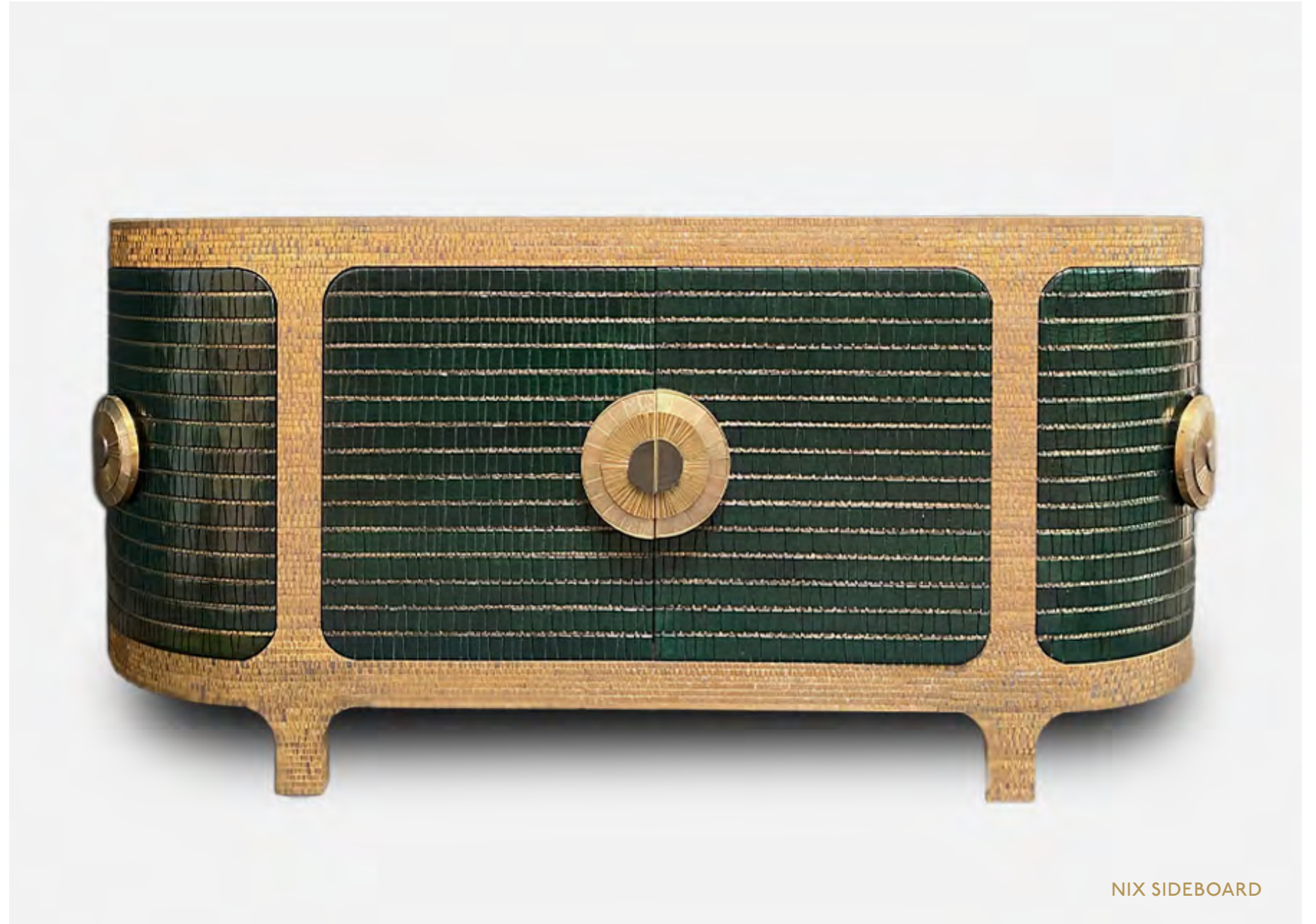


MEDALLION CREDENZA



Damian Jones is a Welsh furniture designer based in L.A. who creates commanding and multi dimensional pieces that are uniquely his own style.

Jones creates his designs by combining exotic woods with hand-cut bronze tiles. Each tile is individually placed to create intricately faceted patterns.



NIX SIDEBOARD



AXLE CONSOLE



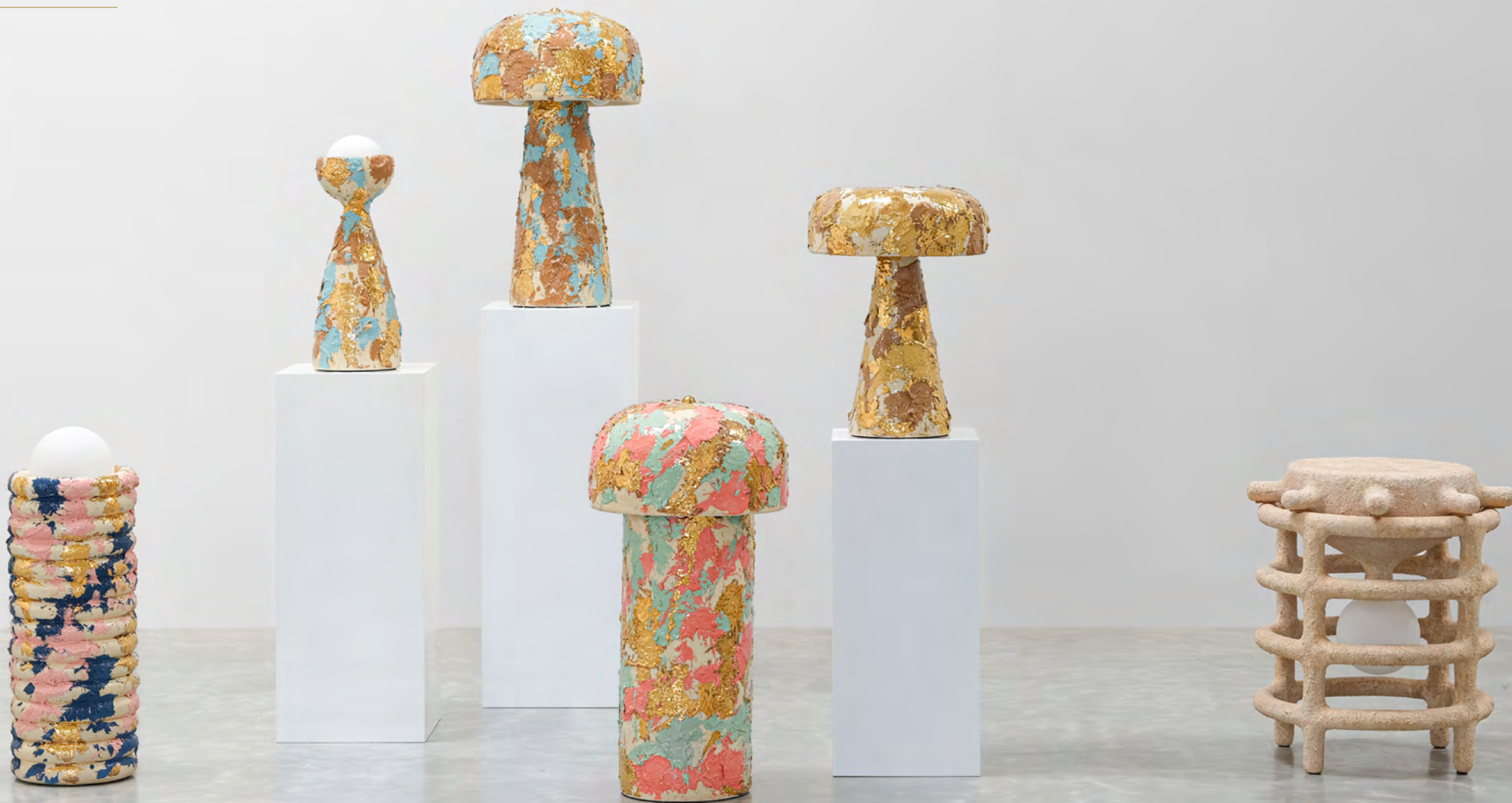
THESAUROS CHEST



UMBRA SIDE TABLE



DANIEL SHAPIRO



SPLAT LAMPS & CAGED SIDE TABLE



Daniel Shapiro is a ceramic artist based in St. Louis who specializes in creating works that are functional, sculptural, and rooted in imagination. Drawing upon his 15 years of experience as a graphic designer, Shapiro's approach to each piece is informed by a fusion of the digital world with the organic medium of clay. This synthesis imbues his works with a sense of playfulness and surprising energy, marrying the contemporary with the timeless.

Daniel's artistic journey has taken him through various corners of the United States, starting from a small Missouri town where he spent his formative years to Miami, New York, and Los Angeles, where he honed his skills as a designer. Each of these locations has contributed to shaping his unique design language, leaving a distinct imprint on his creations.







THE CHIRP FLOOR LAMP



SPLAT LAMP



10 BULB CHANDELIER



RING STACK FLOOR LAMP



DAX SAVAGE

---



BASKETS BY DAX SAVAGE



Dax Savage is an artist and craftsman based in Los Angeles, known for creating handmade sculptural baskets and light fixtures. His unique pieces are made from a blend of natural materials such as antlers, wood, rope, stones, and leather. Dax combines ancient weaving techniques with modern technical skills to give a fresh twist to functional art objects.

Growing up in the rural landscapes and mountains of Idaho, Dax draws inspiration from animals and nature, which has significantly influenced his artistic journey. His creations resonate with both art enthusiasts and nature lovers due to their captivating and soulful essence.

Dax's sculptural baskets comprise custom pieces for residences, commercial spaces, and private collections.



DAX SAVAGE





HANGING SHED MOOSE ANTLER BASKET



CALIFORNIA DRIFTWOOD BASKET



DRIFTWOOD BASKET PENDANT



DE LA VEGA



CAMPANHA BED



Mark de la Vega is the founder and principal designer of DE LA VEGA, based in Red Hook, Brooklyn.

DE LA VEGA takes cues from a variety of global and historical references. Mark uses the highest-quality materials to reinvent forgotten techniques. He offers rugged designs that are expertly refined with a contemporary approach to century old techniques.



DRUM COLLECTION





GIAC SIDE CHAIR



ABUELO BUREAU



GIAC BED



CAMPANHA STORAGE



DOUGLAS FANNING



RUBBLE OUTCROP V



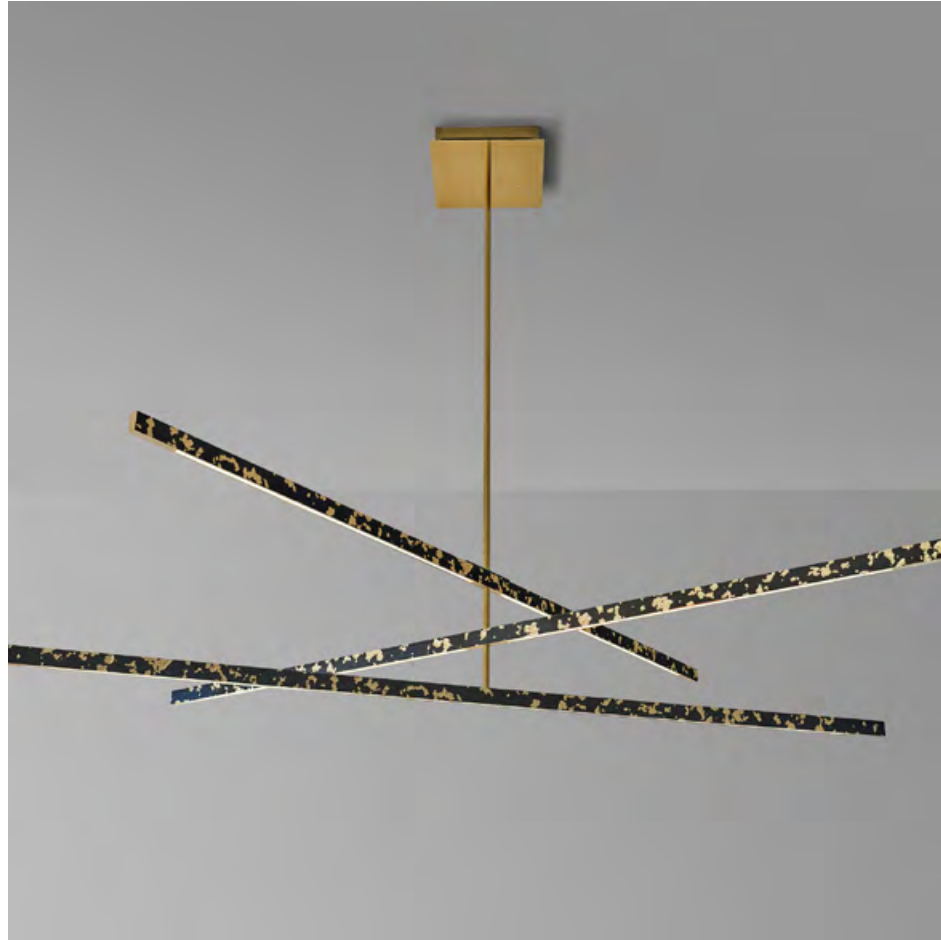
Douglas Fanning is a New York-based artist who creates each piece by hand from his Red Hook, Brooklyn studio.

He is a passionate architect, designer, and creator whose unique work is aptly described as “tough-beauty”. His talent is a marriage of architecture, design, and physics in the form of clean, fluid, daring pieces of art.



DOUGLAS FANNING & 3 - TIER MOBILE





THE TILL



NESTED GROUPING



ARCHIPELAGO TABLE



EDWIN MALDONADO

EDWIN MALDONADO & EVE CHAIR





Los Angeles-based leather artisan Edwin Maldonado is a master of the lost art of traditional French leather upholstery. Edwin sculpts leather over wood and metal frames using a technique of wetting and steaming hides. His skill at manipulating and hand-finishing leather has been perfected over decades of working for luxury furniture brands. With the inception of his own collection, Edwin is free to create the furniture forms he is passionate about – designs with exaggerated curves and intricate details.



ABLE SOFA





ADAM CHAIR



SETH CHAIR



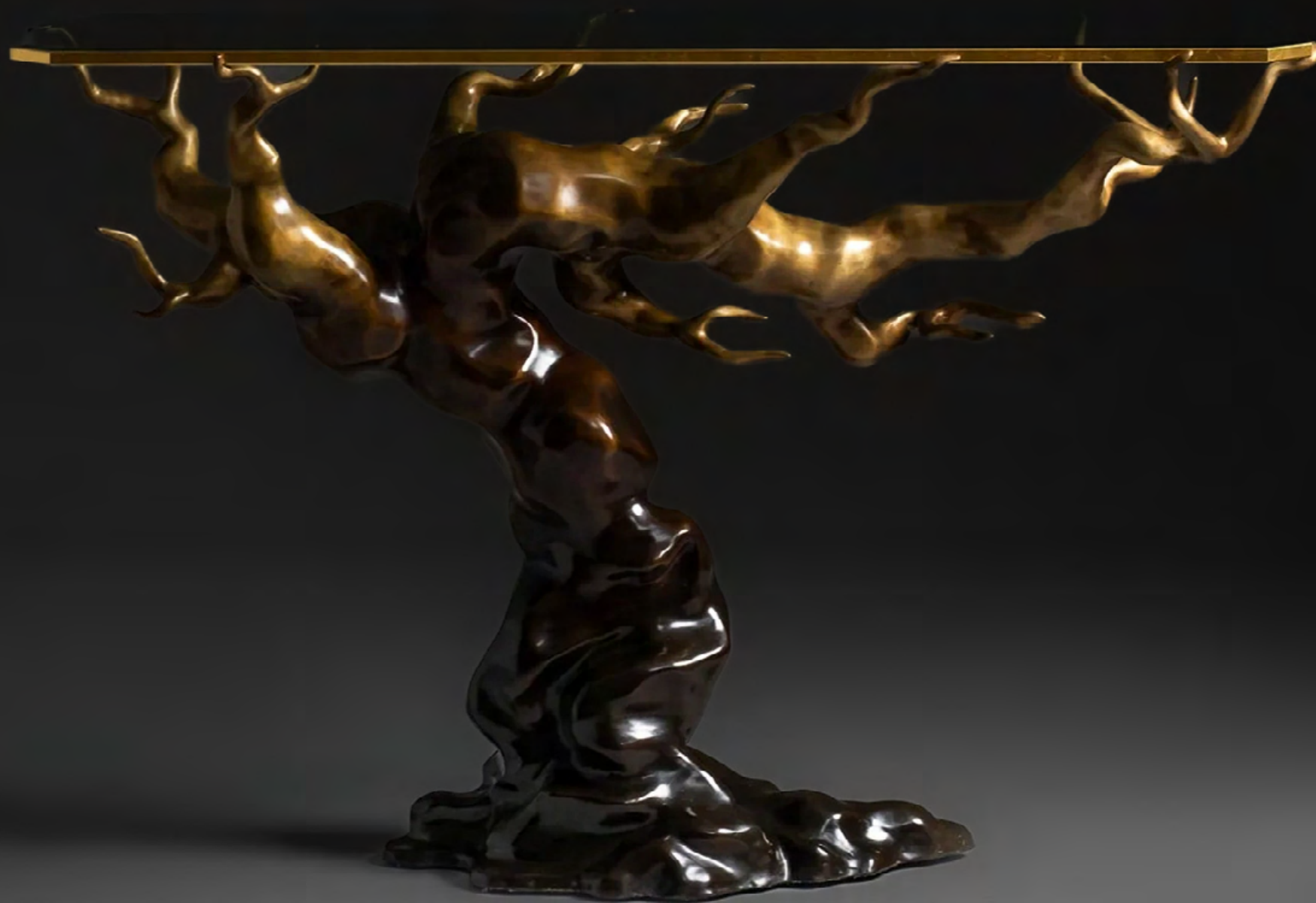
CAIN CHAIR



EVE CHAIR



ELAN ATELIER



FOREST CONSOLE



At Elan Atelier, sublime products are handcrafted with artistry employing old work techniques. Founded in 2014 by Alison Legge and Christopher Noto, Elan Atelier is driven by a deep appreciation of traditional methods, noble materials and modern innovation.

Their goal is to produce unique, inspiring and timeless furniture, lighting and accessories.



UNI VASES





ARCH CONSOLE



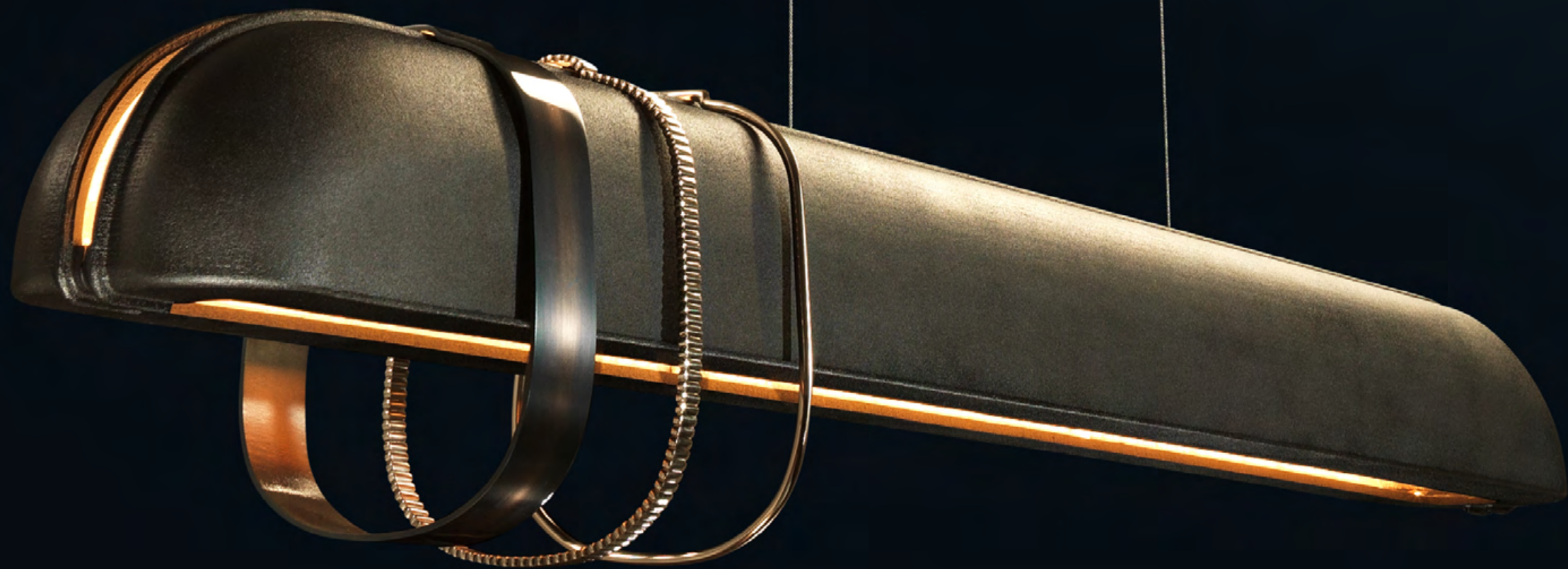
MANHATTAN CENTER TABLE



ALTAI SIDE TABLE



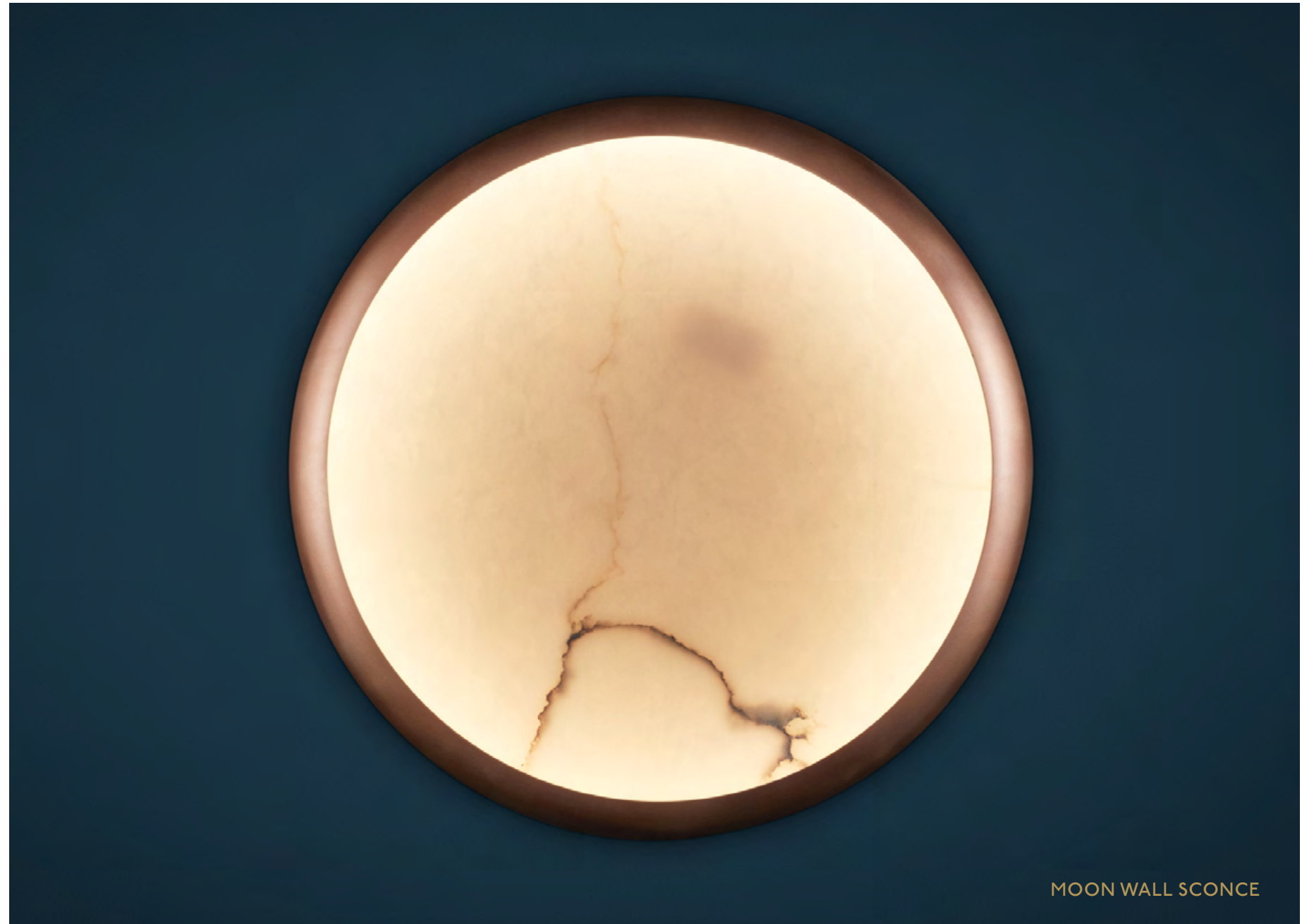
ENTRELACS



ASH PENDANT



All Entrelacs lighting is hand crafted at the family owned Fonderie D'Art Macheret in Le Mans, France. The work relies on a passion for bronze and the creative arts. The lighting collections are a perfect balance of bronze and alabaster. The trained approach creates refined fixtures with a naturally pure and timeless result.



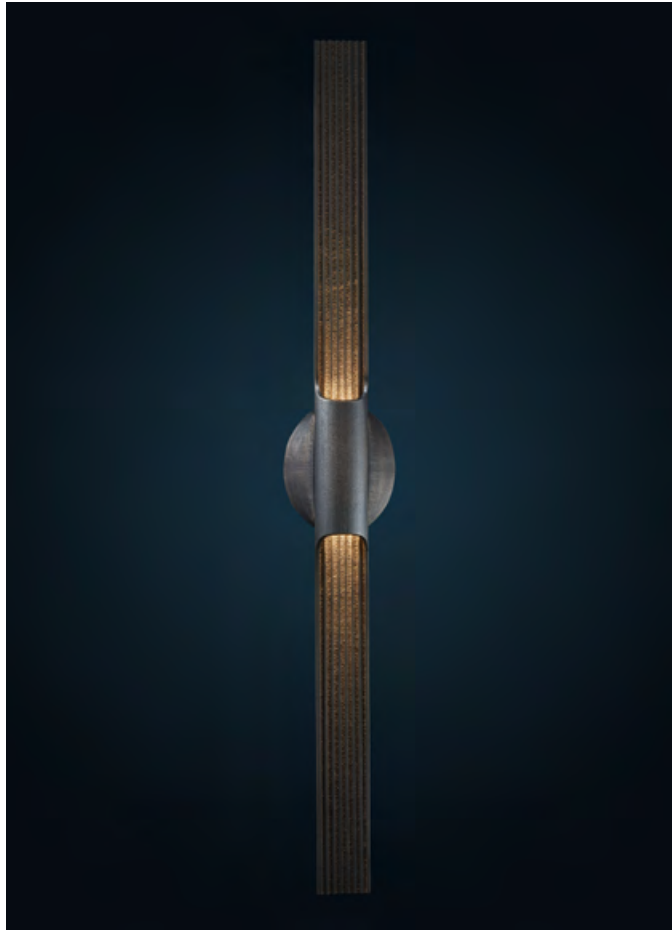
MOON WALL SCONCE



TOAST SCONCE



HUBLOT MIRROR



BEAM SCONCE



NARCISSE TABLE LAMP



STUDIO HARRY SITER



MOTHER NATURE



Harry Siter creates furniture and figures that are both playful and powerful.

Since the early 1990's, Harry Siter has been immersed in his artistic development by using trees to make furniture and art. He shapes the trunks with chain saws and then uses simple, classic approaches to surface and finish. He has become a master at stabilizing thick slabs of wood, and has discovered ways to manipulate and combine them with metal to make new designs and forms.



EVOLUTION CONSOLE TABLE





MOTHER NATURE



DEAR HUNTER



NAIL BRUSH CONSOLE TABLE



JG SWITZER



JESSICA SWITZER



JG Switzer is a textile and soft goods artisan studio focused on designing fabrics made of natural fibers that are hand tailored with custom patterns. Their painterly and modern felted wool is sourced from a local fibershed and made in their workshop in northern California. JG Switzer is devoted to sourcing the finest: wool, silk, linen, cashmere, cotton, and hemp. The studio is dedicated to quality at the highest level, ensuring they can deliver fabrics that are artfully abstract, sustainable, and distinctive.



FABRIC COLORWAYS AT COUP D'ETAT





PAINTERLY BLACK & RED



BOTANICAL



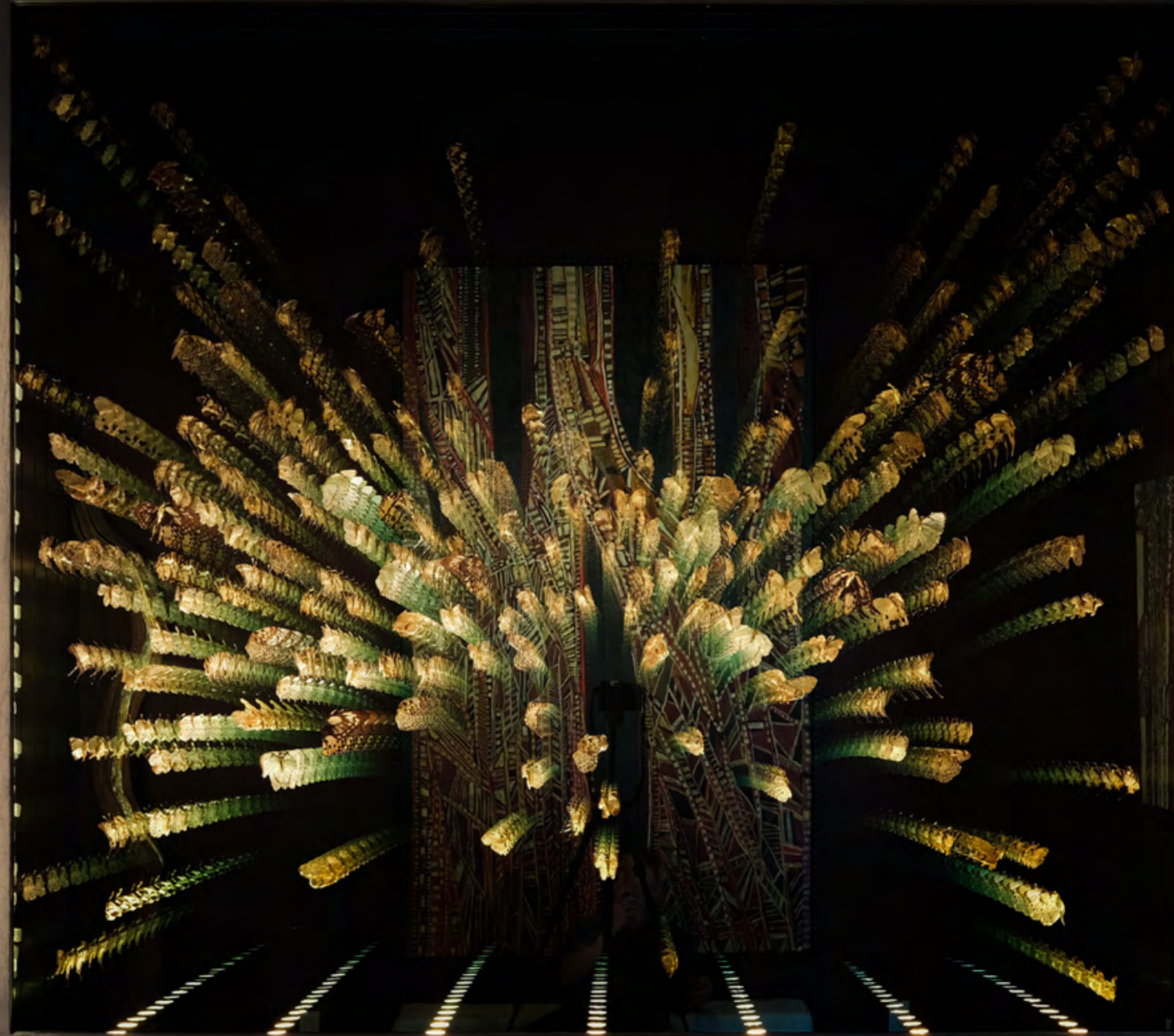
GENESIS



TAHOE



JOCELYN MARSH



INFINITE BUTTERFLIES BY JOCELYN MARSH FOR COUP STUDIO



Jocelyn Marsh is a Los Angeles based artist whose primary mediums include sculpture and lighting design. Central to her work is the theme that existence springs from the unknown space between death and life, the void that causes mixed emotions throughout humanity. Focusing on the thrilling fact that from nothing comes everything, Marsh celebrates this unknown space, imparting upon her work a sense of reverence toward nature.



JOCELYN MARSH

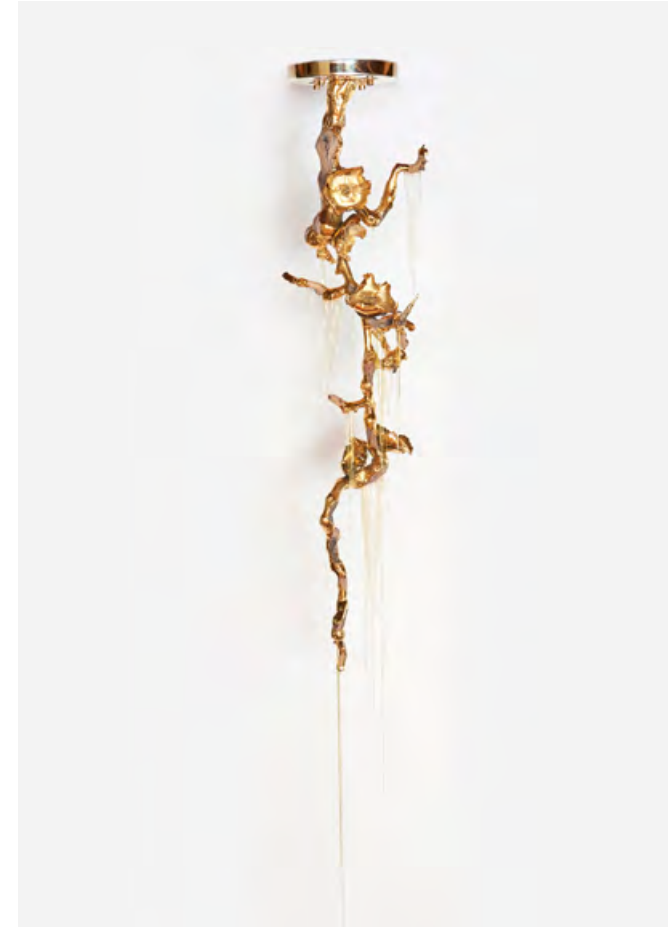




SEA POISON



CONSTELLATION FLOWERS IN COPPER



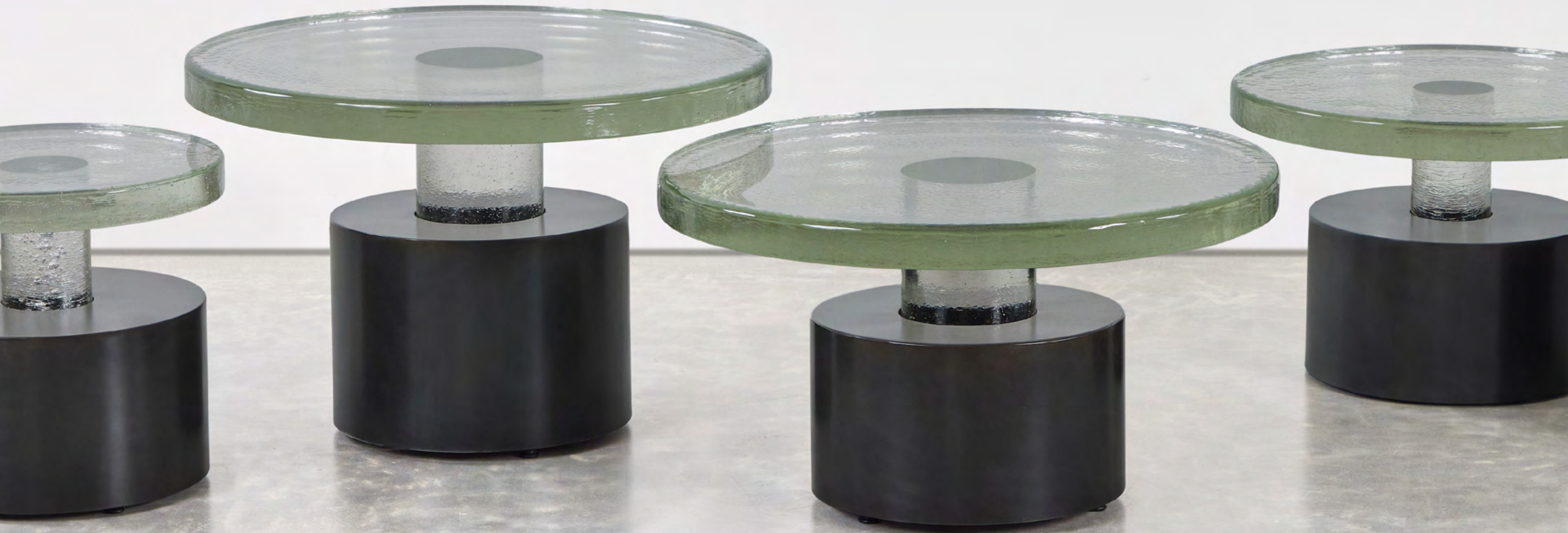
SHOUMEI LIGHT SCULPTURE



PRIMORDIAL EGGS



J LISTON DESIGN



BISHOP TABLES



J LISTON DESIGN is a design and fabrication studio committed to creating high quality furniture and art. John honed his skills over 15 years in custom glass and metal foundries before opening his studio in San Francisco in 2012. Combining experience from jewelry, metalsmithing, foundry, and glass casting, John's designs take influence from architecture, industrial formations and natural objects. Bringing function to the forefront, each piece is designed without excess, executing clean and clear forms handcrafted by John in San Francisco.



DENARII COCKTAIL TABLE





CHARRED WOOD CABINET



ARCHITECT SIDE TABLE/STOOL



BATTEN PENDANT



RIBBON CHAIR



J MCDONALD



CHIMERA BENCH & CHAIR



J McDonald is an artist and designer based in Brooklyn, NY. His work explores the intersections of the built environment, the natural world, and human psychology, examining the complex relationship between humanity and nature. Drawing on his background in architecture and environmental design, craft and metalwork, conceptual art and sculpture – McDonald's practice brings rational, architectural geometries into dialogue with intuitive, organic forms – creating dynamic and refined works of art that challenge perceptions of space, materiality, and the human experience.



STUDIO J MCDONALD





HIVE LAMP



TERRACE MIRROR



CUBE VARIATIONS 5



HEXACORALLIA LUXUS



J.M. SZYMANSKI



TABLE NO. 15 ALTO



J.M. Szymanski is a maker & designer of one of a kind furniture and objects. The studio introduces radical new shapes and explores new materials and textures. Each work demonstrates a fascination with unique geometries, raw materials, and unusual forms. J.M. Szymanski was introduced in 2014 and has attracted the attention of top architects, interior designers, and collectors.

Jake Michael Szymanski lives in New York City where he designs and fabricates his work. His design education began in his early childhood where he and his family spent seven years in Nepal. Later, in his early 20's, he moved to Spain where he studied the designs of Gaudi, visited the Alhambra, and made frequent trips to Morocco. Jake returned to the USA to study interior design. He studied at the Fashion Institute of Technology and at the School of Visual Art. He went on to design for William Sofield.



THE STONE MASON SCULPTURE



SPIRIT TABLE



FLORA NO. 4



MIRROR NO. 4



BAR STOOL



KALLIOPI LYDAKI



CERAMIC FISH INSTALLATION



Kalliopi Lydaki was born in 1963 in Athens, Greece. She began studying art as a young adult, focusing on pictorial arts and sculpture in the atelier of the Greek painter Jiorgos Vogiatzis in Athens. During a trip to Crete, she met the ceramicist, Alda Reis. Inspired by the work in Alda's studio, she began training in ceramics, eventually opening an atelier in Chania, Crete, creating sculptures in porcelain and stoneware at high temperatures. In 2012, she moved her atelier permanently to Florence and started working on a "light art" collection, dedicating herself to making creations in porcelain and clay with glazes made from precious metals. These small ceramic sculptures have inspired her to create large wall installations of different sizes and orientations, enhancing their three-dimensionality by playing with color and light.



CERAMIC FISH INSTALLATION





THE RABBIT



THE GUINI FOWL



THE POODLE



KELLY FARLEY



ICE SCULPTURE AT COUP D'ETAT LA



Kelly Farley is a renowned ceramist and the founder of Pope Valley Ceramics. Kelly creates large-scale suspended sculptures; each artwork is one of a kind and entirely hand-made in his Pope Valley, Napa studio. The ceramic spheres go through an elaborate firing process using a Japanese style kiln called an Anagama. This process enables ash and other elements to serendipitously affect the variety of surfaces and patina of the spheres. Once the firing process is completed, the spheres are assembled according to Farley's vision of how they will interact in the installation environment.

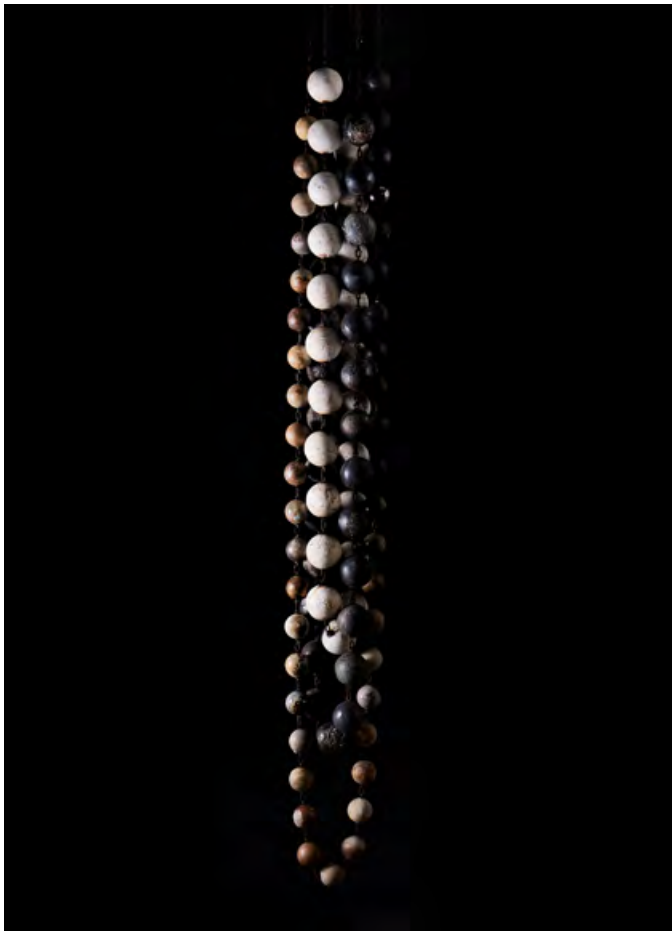


CENTAURI DREAMS





ICE



BLACK CLUSTER



GRAVITY



PART 2



KONEKT



KONEKT TEAM



Konket furniture and lighting are meticulously crafted by artisans with a carefully applied attention to detail. Handmade in Pennsylvania from natural materials that age and patina gracefully, each piece is informed by high-quality craftsmanship and distinguished by an embedded human touch. Unexpected materials like horsehair and chainmail are combined with traditional ones, highlighting the juxtaposition of contrasting textures and finishes.



THING 3 OTTOMAN &amp; RIB LAMPS

Available in:

San Francisco

Los Angeles





THING 3 STOOL



ARMOR PENDANT



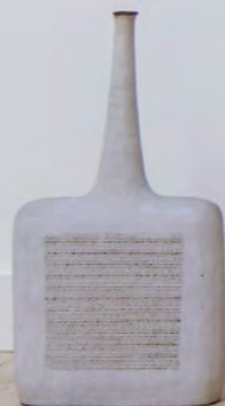
DIONIS DRINKS TABLE



A.CEPA MIRROR



LESLIE NIX



EHLANZENI(SOLD\*) & TEMBA



Los Angeles-based artist Leslie Nix is known for her singular personal style. With an interest in transformative materials, her process relies on experimentation, working in the mediums of oil on canvas, bronze, and glass. Her paintings, sculptural lamps, and decorative objects are influenced by her travels, including experiences in Africa. Nix received her BFA from the Savannah College of Art and Design.

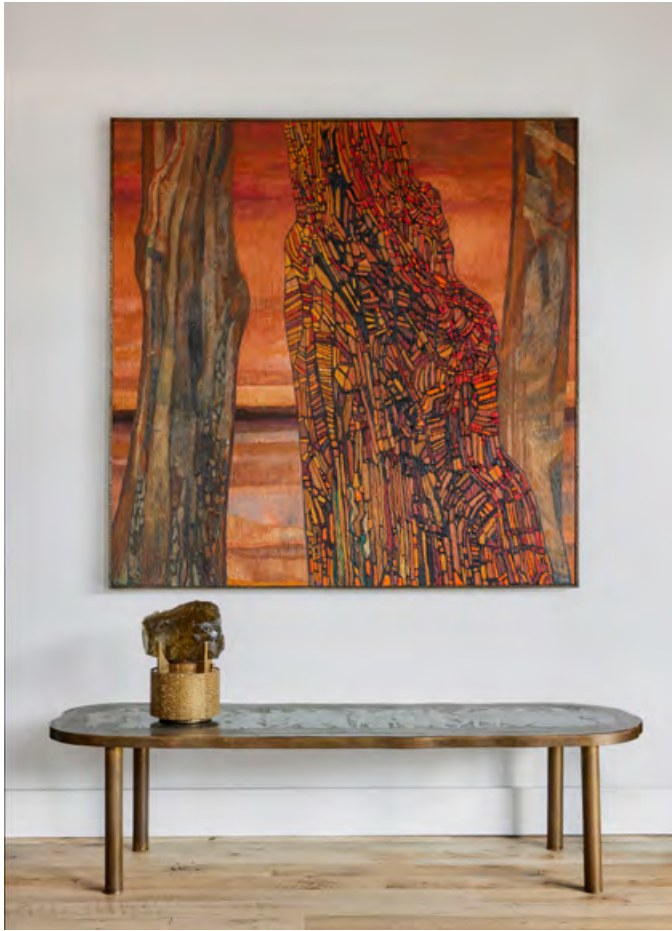


LESLIE NIX

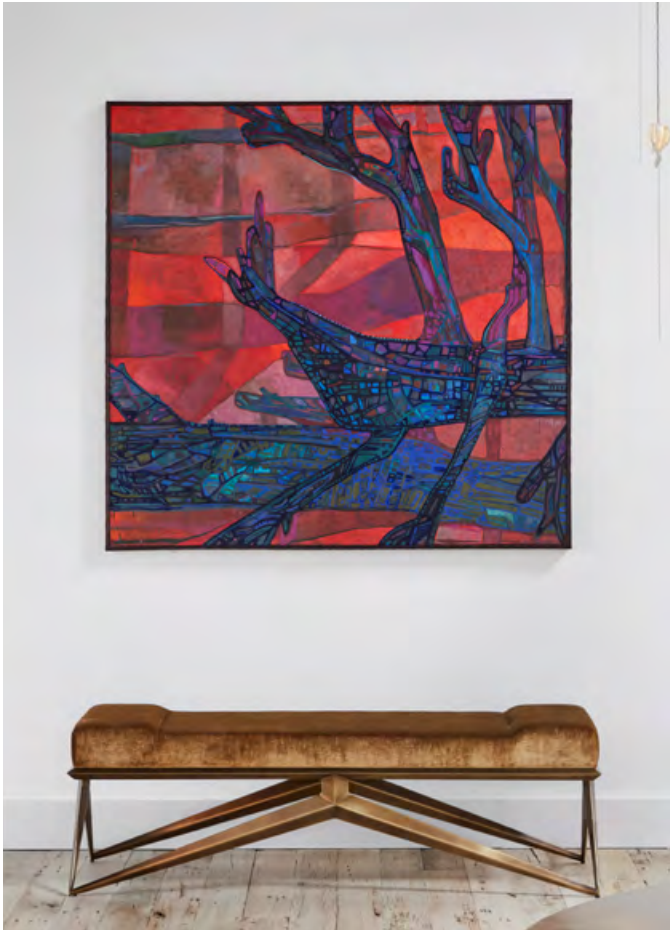




MUMAR



TEMBA



HAZYVIEW



CERULEAN MOODS



LINDA FAHEY



ASSORTMENT OF VESSELS



Linda Fahey is a ceramic artist and proprietor of Yonder Studio in San Francisco.

Linda creates sculptural and functional ceramics, specializing in hand-built forms with illustrative surfaces. With a background in illustration, Linda takes her drawings to the surface of her vessels and ceramic tiles. Linda's talent is sought after for large-scale site-specific projects, including custom tile design. She incorporates design influences directly from a life lived on the northern California coast and from her deep respect of the natural world.



CUSTOM TILE INSTALLATION AT COUP D'ETAT LA





URCHIN BOULE



SERPENTS



CUSTOM TILE PANEL



CUSTOM TILE PANEL



MARY WONG

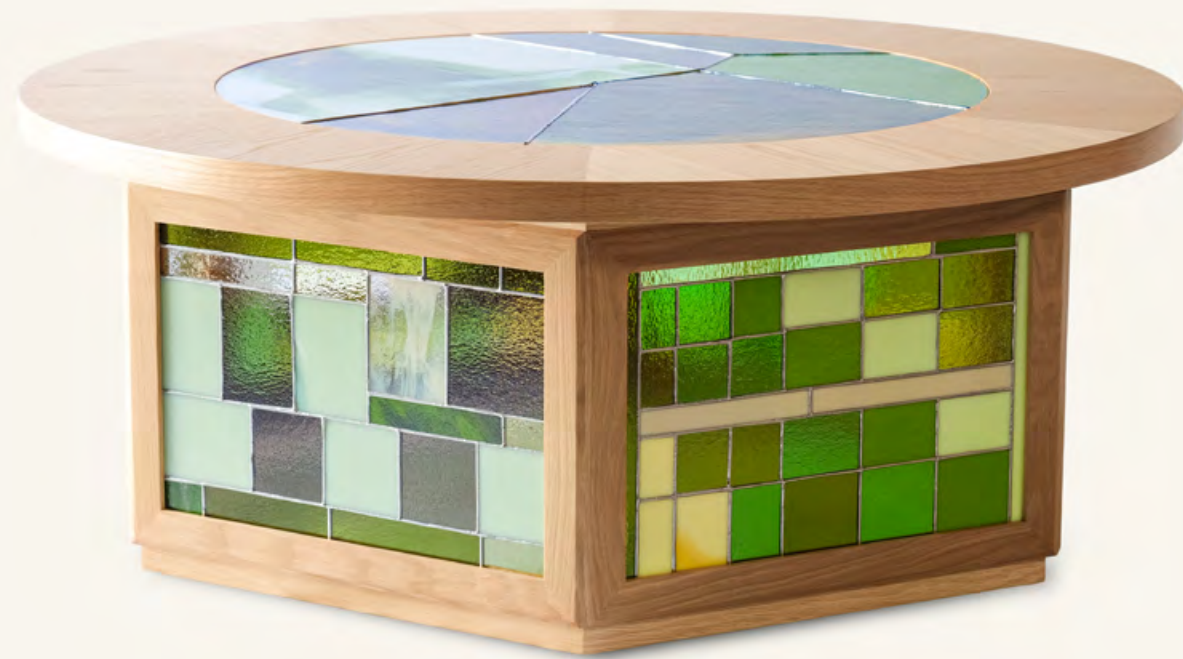


MELANGE SIDE TABLES



Mary Wong is a Philadelphia-based artist and furniture designer whose work fuses stained glass with naturally finished wood, creating sculptural pieces that exist at the intersection of fine art and functional design. Influenced by her background in theater and textile design, each work is a singular composition—featuring hand-drawn geometric patterns and carefully selected materials that ensure no two are ever the same.

Wong's pieces invite viewers and collectors alike to experience everyday objects as thoughtfully crafted works of art.



MELANGE COFFEE TABLE





MELANGE STOOLS



MARGARET COFFEE TABLE



MELANGE TALL SIDE TABLE



OCHRE



MOONLIGHT MURMURATION



OCHRE creates objects of style and beauty which are both timeless and contemporary.

The collection consists of furniture, lighting and accessories with emphasis on the use of high quality craftsmanship. The simplicity and honesty of form, together with the luxurious materials, result in an understated elegance which has become the signature of OCHRE.



ARCTIC PEAR CHANDELIER & ETERNAL DREAMER SOFA





MEDUSA BLOOM



SABLE STOOLS



SEED CLOUD & CARIBOU CHAIR



GAIA PENDANT



OCHRE WILD

WISDEN  
Hospital  
number 180  
86 COLLECTION



The OCHRE WILD collection showcases a captivating array of rugs, crafted in Bengal using ancient techniques and natural dyes. Every OCHRE WILD rug is meticulously handcrafted, from the initial yarn-making and dyeing process to the intricate weaving and finishing touches. Both the Indo-Tibetan and flat-weave Dhurrie rugs are made with a diverse selection of fibers and natural dyes, resulting in a harmonious display of colors and textures. Each rug is a one-of-a-kind creation, embodying sustainable practices and a profound connection to our shared Earth.



KALINDI SUBAH





QUORA



KERALA PINK



AQUA CHIMES



MUGHAL YELLOW



PATRICK WEDER

---



OUTSIDE IN CREDENZA



Swiss-born (New York City-based) designer Patrick Weder creates furniture pieces that balance natural and artisanal processes in an elegant and unassuming way. His choice of wood is a vital part of each design. He selects the wood very carefully, using mainly maple or walnut, considering the wood grain and texture and how they relate to his concept for the final object. Each piece is one-of-a-kind and created by Patrick in his Brooklyn studio. With his great passion for nature and the environment, Weder maintains a focus on sustainability and selective designs built to endure through the ages.



HONEYCOMB LIGHT SCULPTURE





KAVRN STOOL



KAVRN COCKTAIL TABLE



OUTSIDE IN WALL UNIT



PETER BOIGER



COLLECTION SHOWN IN COUP D'ETAT SF



Peter Boiger is an internationally renowned sculptor, best known for his Holocaust Memorial in Jerusalem. Born in Altotting, Germany, Boiger currently resides and works in Northern California. Boiger learned woodworking at his grandfather's carpentry shop. When he was about 15, he became aware of the works of Henry Moore and other 20th-century sculptors. Peter's influences include African, Japanese, and pre-Columbian cultures. He works in several mediums: bronze, stone, and wood. Coup d'Etat has been honored to represent select works from the Peter Boiger Collection since 2012.



WIND PLOW III





TRANSCENDING I



INVOCATION II



BLACK SENTRY



AUGUR I



REFRACTORY



COLLECTION SHOWN IN COUP D'ETAT SF



Founded in 2021 by Angie West from Texas and Alberto Vélez from Bogotá, Refractory is a furniture, lighting, and object design studio based in Chicago. The studio conceives and produces rigorously crafted works in a language that is distinct within American and contemporary design landscapes. Layering traditional methods with modern tools, Refractory is both an evolution and an extension of a community of artisans who seek to create in the space where art meets collectible design.



PROMONTORY COCKTAIL TABLE

Available in:

San Francisco

Los Angeles





SLOOP CANDLE HOLDERS



CYPHER HANGING LIGHTS



OKENITE SCONCE NO.2



PROMONTORY STANDING LAMP



ROSE GOLD SOCIETY



EQUINOX NO.1



Magnus Schevene, the founder and creative director of Rose Gold Society, has long been passionate about illumination in all its forms. His work straddles the line between sculpture and design, taking inspiration from dance and contemporary design trends. Combining handcrafted materials like cast glass with the strong industrial beauty of machine-milled metal components, his lighting designs create radiant warmth while underscoring a passion for engaging spatial forms.

The Equinox design lends itself to infinite custom applications. Each fixture is hand-forged and assembled by expert craftsmen in California. Schevene designed each component, including the LED light diffusers; they are formulated and poured by hand, using craft techniques that yield qualities unattainable by manufactured processes.



MAGNUS SCHEVENE





EQUINOX NO.1



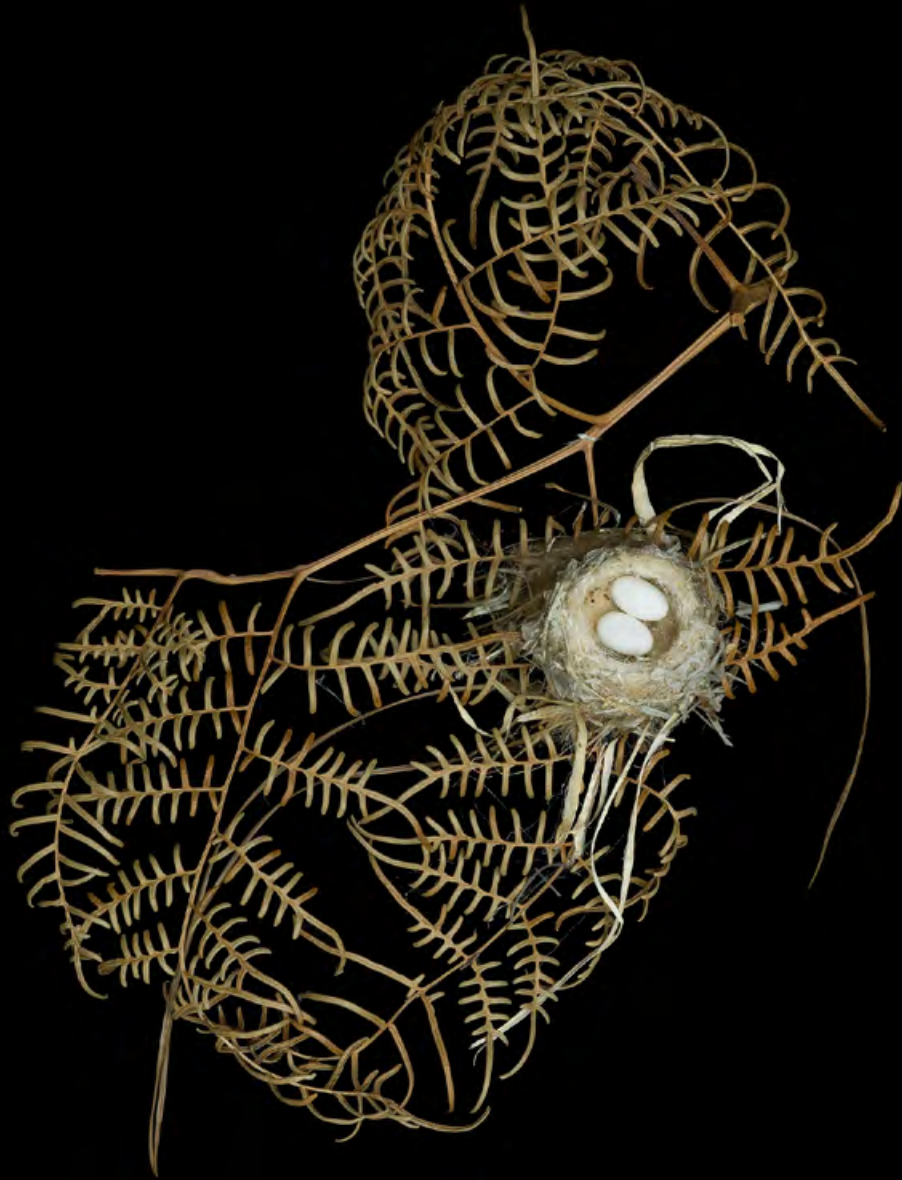
EQUINOX NO.2



EQUINOX NO.3



## SHARON BEALS





San Francisco-based photographer Sharon Beals has been photographing nineteenth and twentieth century bird nests preserved in museum and science collections since 2007. She is the author and photographer of *Nests: Fifty Nests and the Birds That Built Them*. Beals is compelled to photograph nests for their form and the spectacular color of bird eggs. Her images provide insight into the beauty and mystery of nature's extraordinary architects. In addition to nests, Beals photographs wild native habitats and watersheds, and most recently, serpentine coastal fault lines. She uses her images to create awareness of native habitats as well as river and ocean conservation.



LESSER GOLDFINCH





PIRANGA LUDOVICIANA



BARN SWALLOW NEST (HIRUNDO RUSTICA)



TREE SWALLOW NEST



SKRAM



SADDLESTOOLS



Skram Furniture Company, founded in 2001, is based in the Piedmont region of North Carolina. The company has earned a domestic and international following for its distinctive approach to modern design—one that emphasizes sustainable practices, authentic materials, and extraordinary workmanship.

Skram craftsmen utilize a mix of traditional techniques and cutting-edge fabrication processes to create products that meet the highest standards of precision and durability. With expertise in a wide range of materials—including timber, hardwood veneer, assorted metals, leather, and stone—the company's products are uniquely suited to diverse settings. Skram's furnishings are specified in a broad range of environments from residential to commercial and hospitality.



FOUNDER, DESIGNER — A. JACOB MARKS





WYANDOTTE GUEST CHAIR



ALTAI SIDE TABLES



PIEDMONT CHEST ON STAND



TIGRIS BED



## COUP D'ETAT

SAN FRANCISCO

III RHODE ISLAND STREET, SUITE I  
SAN FRANCISCO, CA 94103

P. 415-241-9300

INFO@COUPDETATSF.COM



COUPDETATSF.COM

## COUP D'ETAT

LOS ANGELES

100 N ROBERTSON BLVD  
LOS ANGELES, CA 90048

P. 323-825-5880

INFO@COUPDETATSF.COM



IG @COUPDETATSF



